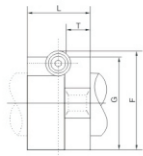
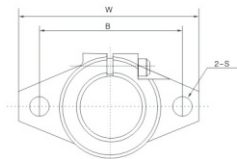
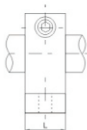
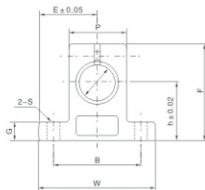


**直线滑动单元支撑系列**  
 Winding shape ball joint rod ends series

**SHF...A**


型号 Model No.	轴径 Shaft Diameter	主要尺寸 Dimensions (mm)								锁紧螺栓 Locking Bolt	安装螺栓 Clamping Bolt	重量 Weight (kg/m)
		W	L	T	F	G	B	S	E			
SHF 3A	3	43	10	5	24	20	32	5.5	M4	M5	0.013	
SHF 4A	4	43	10	5	24	20	32	5.5	M4	M5	0.013	
SHF 5A	5	43	10	5	24	20	32	5.5	M4	M5	0.013	
SHF 6A	6	43	10	5	24	20	32	5.5	M4	M5	0.013	
SHF 8A	8	43	10	5	24	20	32	5.5	M4	M5	0.013	
SHF 10A	10	43	10	5	24	20	32	5.5	M4	M5	0.013	
SHF 12A	12	47	13	7	28	25	36	5.5	M4	M5	0.020	
SHF 13A	13	47	13	7	28	25	36	5.5	M4	M5	0.020	
SHF 16A	16	50	16	8	31	28	40	5.5	M4	M5	0.027	
SHF 20A	20	60	20	8	37	34	48	7	M5	M6	0.040	
SHF 25A	25	70	25	10	42	40	56	7	M5	M6	0.060	
SHF 30A	30	80	30	12	50	46	64	9	M6	M8	0.110	
SHF 35A	35	92	35	14	58	50	72	12	M6	M10	0.380	
SHF 40A	40	102	40	16	67	56	80	12	M10	M10	0.510	
SHF 50A	50	122	50	19	83	70	96	14	M12	M12	0.890	
SHF 60A	60	140	60	23	95	82	112	14	M12	M12	1.500	

**直线滑动单元支撑系列**  
 Linear motion ball slide units series

**SH...A**


支撑型号 Support Designation	轴径尺寸 Shaft Dimensions	主要尺寸 Dimensions (mm)										锁紧螺栓 Locking Bolt	安装螺栓 Clamping Bolt	重量 Weight (kg/m)
		h	E	W	L	F	G	P	B	S				
SH 8A	8	20	21	42	14	32.8	6	18	32	5.5	M4	M5	24	
SH 10A	10	20	21	42	14	32.8	6	18	32	5.5	M4	M5	24	
SH 12A	12	23	21	42	14	37.5	6	20	32	5.5	M4	M5	30	
SH 13A	13	23	21	42	14	37.5	6	20	32	5.5	M4	M5	30	
SH 16A	16	27	24	48	16	44	8	25	38	5.5	M4	M5	40	
SH 20A	20	31	30	60	20	51	10	30	45	6.6	M5	M6	70	
SH 25A	25	35	35	70	24	60	12	38	56	6.6	M6	M6	130	
SH 30A	30	42	42	84	28	70	12	44	64	9	M6	M8	180	
SH 35A	35	50	49	98	32	82	15	50	74	11	M8	M10	270	
SH 40A	40	60	57	114	36	96	15	60	90	11	M8	M10	420	
SH 50A	50	70	63	126	40	120	18	74	100	14	M12	M12	750	
SH 60A	60	80	74	148	45	136	18	90	120	14	M12	M12	1100	